

US 119 CORRIDOR STUDY

Environmental Justice Report



Prepared By:
Cumberland Valley Area Development District
P.O. Box 1740
London, KY 40743



Division of Planning

Table of Contents

	<i>Page</i>
<i>1.0 Introduction</i>	<i>1</i>
<i>2.0 Study Findings / Study Area</i>	<i>1</i>
<i>3.0 Study Findings / Population by Race</i>	<i>2</i>
<i>4.0 Study Findings / Population by Poverty Level</i>	<i>2</i>
<i>5.0 Study Findings / Population by Persons 65 and Over</i>	<i>2</i>
<i>6.0 Conclusion</i>	<i>3</i>

Appendices

Appendix A: Census Tracts and Block Groups (Maps)

Population by Black or African American (Map 1)

Population by Hispanic or Latino (Map 2)

Population by Poverty Level (Map 3)

Population by Persons 65 and Over (Map 4)

Appendix B: Census Tracts and Block Groups (Table)

1.0 Introduction

This document assesses the community demographics involved in THE us 119 Corridor Study. The Cumberland Valley Area Development District has analyzed and prepared the following document to identify any concentration of population that could be displaced or segmented as result. The data displayed in this report has been compiled from a number of sources including the U.S. Census Bureau, Kentucky State Data Center, Kentucky Transportation Cabinet (KYTC) Division of Planning, local elected officials, community leaders, and field observations of the study area. The information and results are intended to assist the Kentucky Transportation Cabinet in making informed and prudent transportation decisions in the study area, especially as it pertains to the requirements of Executive Order 12898¹, to ensure equal protection to all groups potentially impacted by the study.

This report includes maps and tables of statistical comparisons of the study area based on US Census tracts and block groups with regard to minority, low income, and aging populations for the United States, Kentucky, Bell County and Harlan County. The Study area includes tracts and block groups directly in and around portions of the defined area.

2.0 Study Findings / Study Area

This Environmental Justice and Community Impact Report should be utilized as a component of the planning study being conducted by Kentucky Transportation Cabinet's Division of Planning, for the US 119 Corridor Study within Bell and Harlan County.

This study is intended to help define the location and purpose of the project and meet federal requirements regarding consideration of environmental issues as defined in the National Environmental Policy Act (NEPA).

The US 119 Corridor Study within Bell and Harlan Counties consist of 12 Block Groups within 7 Census Tracts. The Census Tracts and Block Groups are listed below. (*Appendix A* includes maps). Detailed data of Census Tracts and Block Groups are located in *Appendix B* of this document.

Bell County:

Census Tract 9602	Census Tract 9603	Census Tract 9604
Block Group: 3, 4	Block Group: 1	Block Group: 1

Harlan County:

Census Tract 9704	Census Tract 9706	Census Tract 9707	Census Tract 9708
Block Group: 1	Block Group: 2	Block Group: 1,2,3,4	Block Group: 1,2

¹ Executive Order 12898 signed February 11, 1994 states "...each Federal agency shall make achieving environmental justice part of its mission by identifying and addressing, as appropriate, disproportionately high and adverse human health or environmental effects of its programs, policies, and activities on minority populations and low-income populations..."

3.0 Study Findings / Population by Race

The defined study area within the US 119 Corridor Study encompasses portions of the following Census Tracts: 9602, 9603, 9604, 9704, 9706, 9707, and 9708. Bell and Harlan County's population, by race percentages, is lower than the national and state averages. All of the Census Tracts within the study area are below or comparable with state and national averages.

4.0 Study Findings / Population by Poverty

The defined study area within the US 119 Corridor Study encompasses portions of the following Census Tracts: 9602, 9603, 9604, 9704, 9706, 9707, and 9708. Bell and Harlan County's population below poverty level exceeds the state and national levels. Although the census tracts defined in the study have higher levels of population below poverty that are higher than state and national levels they are comparable to the regional percentages. However, there are two Block Groups within the study area that have a much higher percentage than the remaining Block Groups. They include Census Tract 9602 Block Group 4 at 46.91% and Census Tract 9706 Block Group 2 at 41.85%.

Census Tract 9706 has the highest percentage of the population below poverty level in the study area at 37.29 percent. That percent is three times the national average of 12.43 percent. Block group 2 is listed as containing 41.85 percent of the population below poverty level, which exceeds the regional averages by approximately 10%. A subsequent review of poverty data within affected Census divisions should be undertaken to insure that these groups are not disproportionately affected by any projects.

5.0 Study Findings / Population by Persons 65 and Over

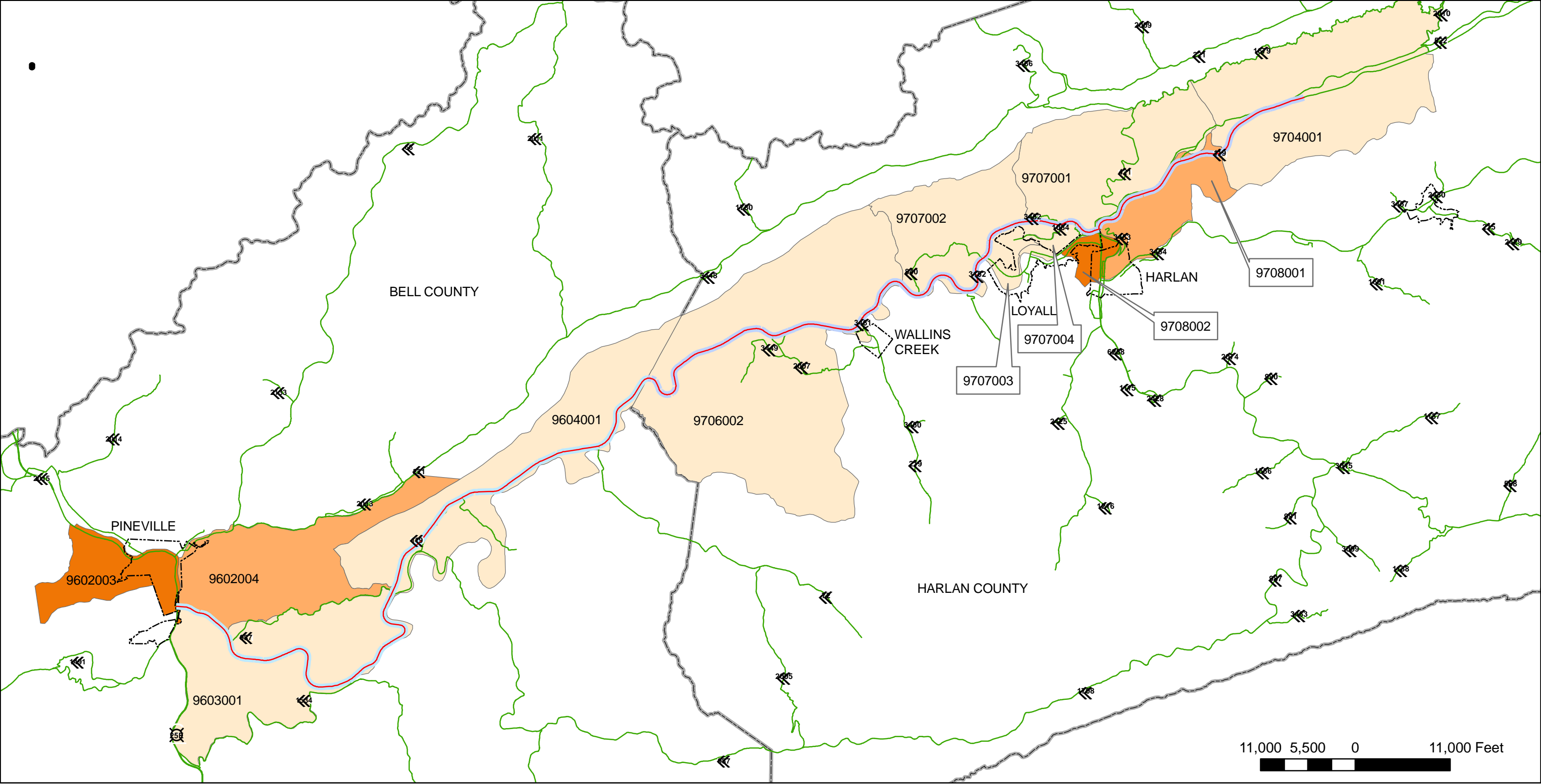
The defined study area within the US 119 Corridor Study encompasses portions of the following Census Tracts: 9602, 9603, 9604, 9704, 9706, 9707, and 9708. The aging characteristics and percentages for Bell and Harlan County are similar to other Census Tracts in the county, the state, and the nation. However there are some elevated percentages of 65 and over age groups in two Census Tracts. Census Tract 9602 Block Group 3 and 4 and Census Tract 9708 Block Group 1 and 2 show an elevated percentage in the number of people 65 and over. Census Tract 9602 Block Group 3 (18.69%) and Block Group 4 (16.78%) and Census Tract 9708 Block Group 1 (19.28%) and Block Group 2 (19.16%) shows potential higher levels of aging population. After discussions with other community members, it appears that the higher percentages are the result of older sections of the City of Pineville in Bell County and the City of Harlan in Harlan County. It is anticipated that the implementation of projects would not have a disproportionate affect on the population of persons age 65 and over residing in the study area.

6.0 Conclusion

Based on data obtained from the U.S. Census Bureau for income, race, and age, discussions with local officials and field observations; it appears there is a small concentration of populations over 65 years of age within the study area. The concentrations identified should not be affected.

Analysis of the minority population data showed several of the block groups as having an identified concentration of some sort. Some were significant while some were only minor. The more significant concentrations identified were noted in the narrative analysis. All areas within this study should be given full consideration in the planning process to achieve the goals put forth by the U.S. Department of Transportation. The concentrations identified should not be adversely affected by improvements.

The elevated percentages in the populations below the poverty level might be indicative of concentrations throughout the study area. However, based on the economic status of this rural depressed county, these percentages are not uncommon for this area.



Appendix A
Map 1

**Population by
Black
or
African
American**

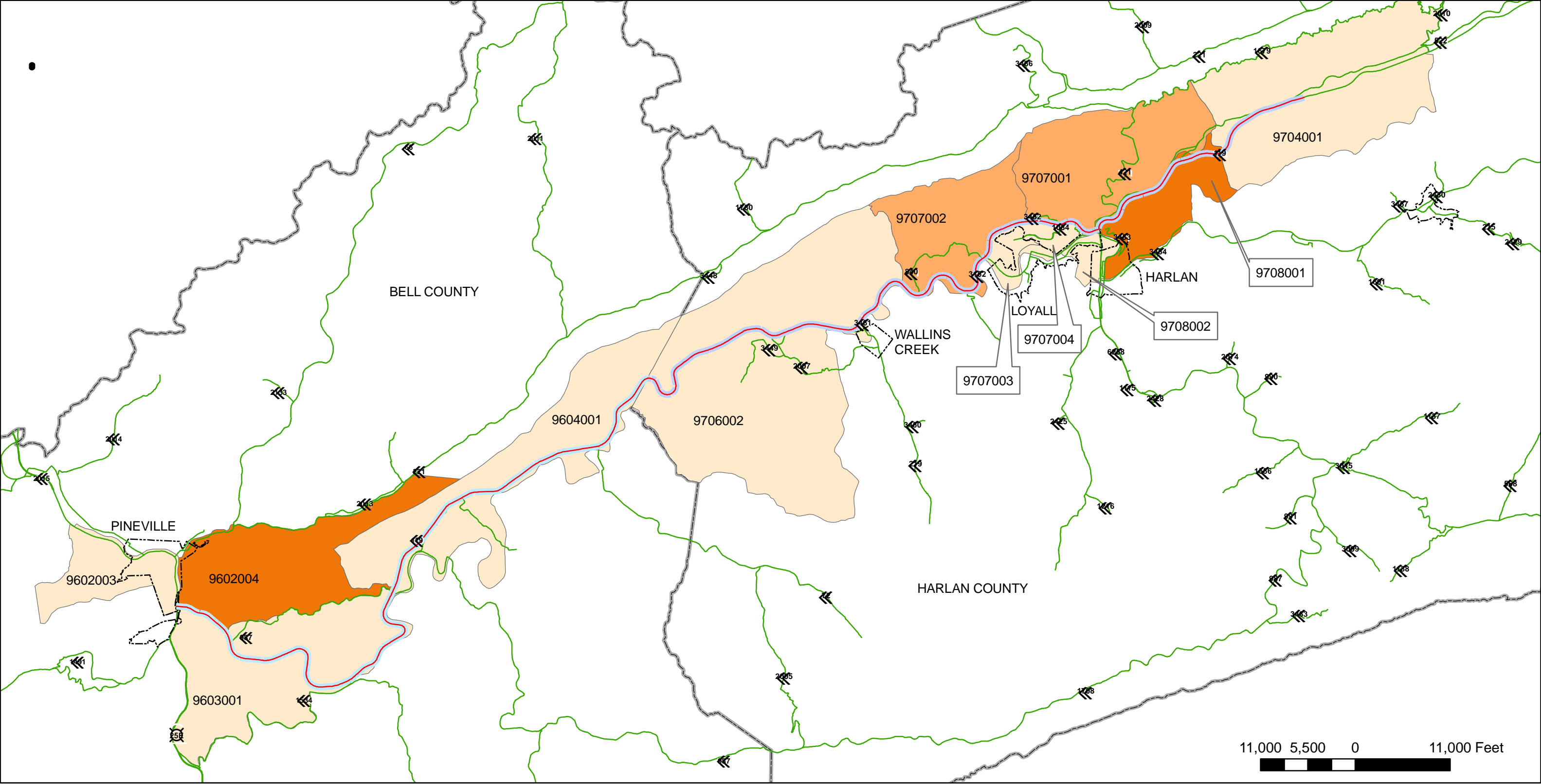
Legend

- US119 Corridor Study
- City Boundary
- State Routes
- Block Groups
- County Boundary

Percent (Bell)		Percent (Harlan)	
0.00	0.00		
0.01 - 1.78	0.01 - 3.13		
1.78 - 3.83	3.13 - 5.38		



Division of Planning



Appendix A
Map 2

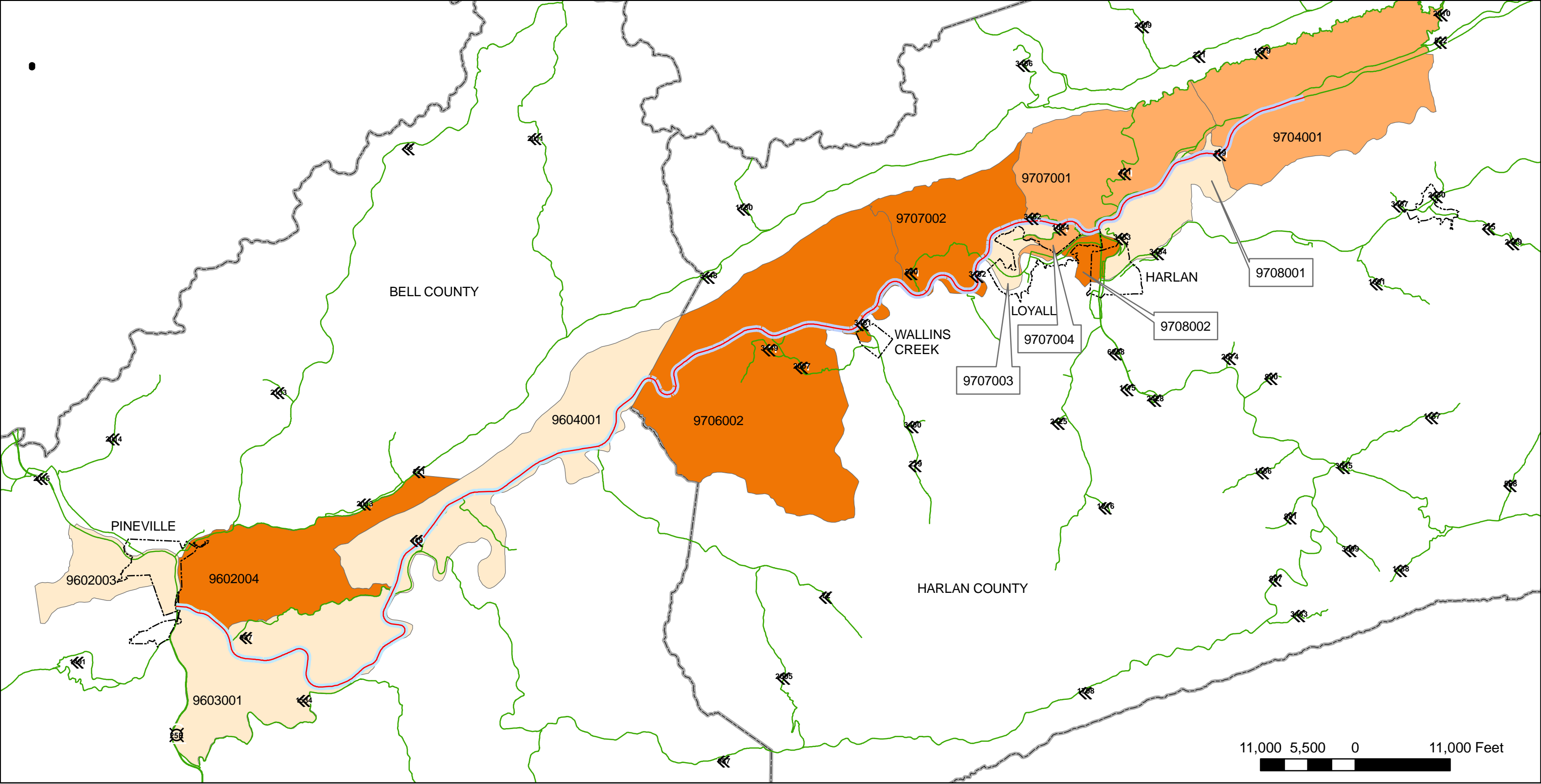
**Population
by
Hispanic
or
Latino**

Legend

- US119 Corridor Study
- City Boundary
- State Routes
- Block Groups
- County Boundary

Percent (Bell)		Percent (Harlan)	
	0.00		0.00
	0.00 - 0.53		0.00 - 1.45
			1.45 - 2.86





Appendix A
Map 3
Population
by
Poverty
Level

Legend

- US119 Corridor Study
- City Boundary
- State Routes
- Block Groups
- County Boundary

Percent (Bell)

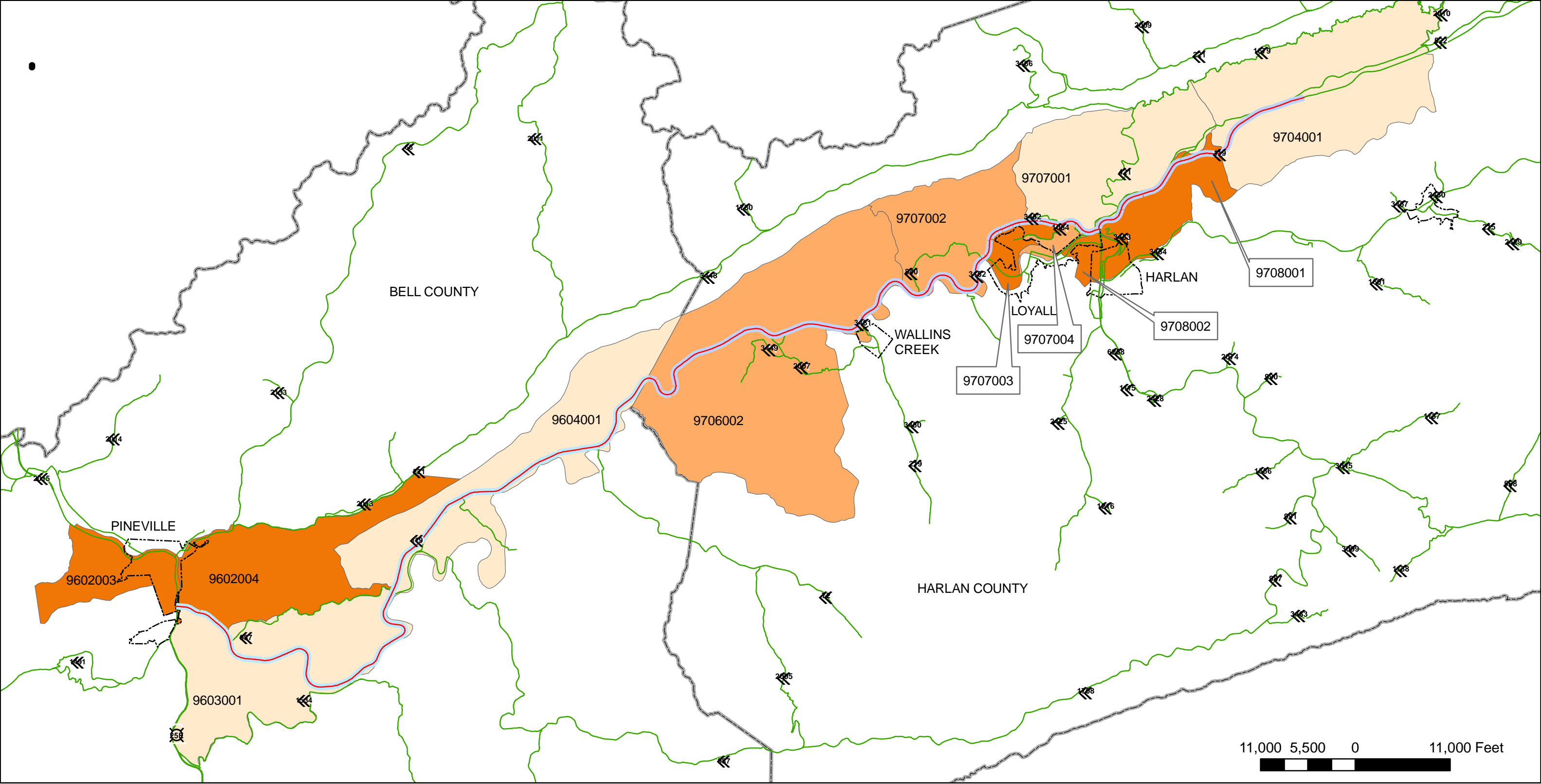
- 24.32 - 29.51
- 29.51 - 46.60

Percent (Harlan)

- 17.53 - 19.98
- 19.98 - 26.32
- 26.32 - 40.66



Division of Planning



Appendix A
Map 4
**Population
by
Persons
65 and
Over**

Legend

- US119 Corridor Study
- City Boundary
- State Routes
- Block Groups
- County Boundary

Percent (Bell)

- 10.68 - 12.39
- 12.39 - 18.85

Percent (Harlan)

- 8.53 - 9.81
- 9.81 - 12.47
- 12.47 - 19.62



Division of Planning

Appendix B

Region	Total Population	White Alone	Percent White Alone	Black or African American Alone	Percent Black or African American Alone	American Indian and Alaska Native Alone	Percent American Indian and Alaska Native Alone
United States	281,421,906	211,353,725	75.10%	34,361,740	12.21%	2,447,989	0.87%
Kentucky	4,041,769	3,639,168	90.04%	293,915	7.27%	9,080	0.22%
Bell County	30,060	28,875	96.06%	745	2.48%	30	0.10%
Harlan County	33,202	31,799	95.80%	721	2.17%	105	0.32%
Bell County Census Tracts and Block Groups							
Census Tract 9602	5,723	5,556	97.08%	77	1.35%	0	0.00%
Block Group 3	1,236	1,149	92.96%	47	3.80%	0	0.00%
Block Group 4	1,669	1,600	95.87%	30	1.80%	0	0.00%
Census Tract 9603							
Census Tract 9603	2,445	2,434	99.60%	5	0.20%	0	0.00%
Block Group 1	1,591	1,591	100.00%	0	0.00%	0	0.00%
Census Tract 9604							
Census Tract 9604	1,836	823	99.30%	0	0.00%	8	0.44%
Block Group 1	870	870	100.00%	0	0.00%	0	0.00%
Harlan County Census Tracts and Block Groups							
Census Tract 9704	1,321	1,317	99.70%	0	0.00%	0	0.00%
Block Group 1	668	664	99.40%	0	0.00%	0	0.00%
Census Tract 9706							
Census Tract 9706	3,382	3,299	97.55%	0	0.00%	2	0.06%
Block Group 2	1,441	1,414	98.13%	0	0.00%	0	0.00%
Census Tract 9707							
Census Tract 9707	4,357	4,202	96.44%	4	0.09%	8	0.18%
Block Group 1	1,300	1,206	92.77%	0	0.00%	8	0.62%
Block Group 2	968	962	99.38%	0	0.00%	0	0.00%
Block Group 3	717	710	99.02%	0	0.00%	0	0.00%
Block Group 4	629	603	95.87%	0	0.00%	0	0.00%
Census Tract 9708							
Census Tract 9708	1,564	1,471	94.05%	58	3.71%	0	0.00%
Block Group 1	1,136	1,071	94.28%	35	3.08%	0	0.00%
Block Group 2	428	400	93.46%	23	5.37%	0	0.00%

Source: www.census.gov

Summary File 3 (SF3)

Detailed Tables: P6-Race, P7-Hispanic or Latino by Race,
P8-Sex by Age, P87-Poverty Status in 1999 by Age

Appendix B

Region	Asian Alone	Percent Asian Alone	Native Hawaiian and Other Pacific Islander Alone	Percent Native Hawaiian and Other Pacific Islander Alone	Some Other Race Alone	Percent Some Other Race Alone	Two or More Races
United States	10,171,820	3.61%	378,782	0.13%	15,436,924	5.49%	7,270,926
Kentucky	28,994	0.72%	1,155	0.03%	22,116	0.55%	47,341
Bell County	65	0.22%	13	0.04%	97	0.32%	235
Harlan County	128	0.39%	18	0.05%	29	0.09%	402
Bell County Census Tracts and Block Groups							
Census Tract 9602	5	0.09%	0	0.00%	20	0.35%	65
Block Group 3	0	0.00%	0	0.00%	0	0.00%	40
Block Group 4	5	0.30%	0	0.00%	9	0.54%	25
Census Tract 9603	0	0.00%	0	0.00%	0	0.00%	6
Block Group 1	0	0.00%	0	0.00%	0	0.00%	0
Census Tract 9604	0	0.00%	0	0.00%	0	0.00%	5
Block Group 1	0	0.00%	0	0.00%	0	0.00%	0
Harlan County Census Tracts and Block Groups							
Census Tract 9604	0	0.00%	0	0.00%	0	0.00%	4
Block Group 1	0	0.00%	0	0.00%	0	0.00%	4
Census Tract 9706	7	0.21%	0	0.00%	0	0.00%	74
Block Group 2	5	0.35%	0	0.00%	0	0.00%	22
Census Tract 9707	33	0.76%	18	0.41%	6	0.14%	86
Block Group 1	14	1.08%	0	0.00%	0	0.00%	72
Block Group 2	0	0.00%	0	0.00%	6	0.62%	0
Block Group 3	5	0.70%	0	0.00%	0	0.00%	2
Block Group 4	8	1.27%	18	2.86%	0	0.00%	0
Census Tract 9708	14	0.90%	0	0.00%	5	0.32%	16
Block Group 1	14	1.23%	0	0.00%	5	0.44%	11
Block Group 2	0	0.00%	0	0.00%	0	0.00%	5

Source: www.census.gov

Summary File 3 (SF3)

Detailed Tables: P6-Race, P7-Hispanic or Latino by Race,
P8-Sex by Age, P87-Poverty Status in 1999 by Age

Appendix B

Region	Percent Two or More Races	Hispanic or Latino	Percent Hispanic or Latino	Persons 65 and Over	Percent Persons 65 and Over	Persons Below Poverty Level	Percent Persons Below Poverty Level
United States	2.58%	35,238,481	12.52%	34,978,972	12.43%	33,899,812	12.05%
Kentucky	1.17%	56,414	1.40%	503,668	12.46%	621,096	15.37%
Bell County	0.78%	138	0.46%	4,027	13.40%	9,105	30.29%
Harlan County	1.21%	240	0.72%	4,618	13.91%	10,662	32.11%
Bell County Census Tracts and Block Groups							
Census Tract 9602	1.14%	32	0.56%	755	13.19%	2,042	35.68%
Block Group 3	3.24%	0	0.00%	231	18.69%	298	24.11%
Block Group 4	1.50%	9	0.54%	280	16.78%	783	46.91%
Census Tract 9603	0.25%	0	0.00%	270	11.04%	763	31.21%
Block Group 1	0.00%	0	0.00%	169	10.62%	467	29.35%
Census Tract 9604	0.27%	16	0.87%	247	13.45%	511	27.80%
Block Group 1	0.00%	0	0.00%	108	12.41%	239	27.47%
Harlan County Census Tracts and Block Groups							
Census Tract 9604	0.30%	13	0.98%	137	10.37%	260	19.68%
Block Group 1	0.60%	0	0.00%	63	9.43%	169	25.30%
Census Tract 9706	2.19%	24	0.71%	455	13.45%	1261	37.29%
Block Group 2	1.53%	0	0.00%	185	12.84%	603	41.85%
Census Tract 9707	1.97%	25	0.57%	641	14.71%	957	21.96%
Block Group 1	5.54%	10	0.77%	106	8.15%	292	22.46%
Block Group 2	0.00%	15	1.55%	116	11.98%	309	31.92%
Block Group 3	0.28%	0	0.00%	112	15.62%	125	17.43%
Block Group 4	0.00%	0	0.00%	77	12.24%	138	21.94%
Census Tract 9708	1.02%	32	2.05%	301	19.25%	359	22.95%
Block Group 1	0.97%	32	2.82%	219	19.28%	223	19.63%
Block Group 2	1.17%	0	0.00%	82	19.16%	136	31.78%

Source: www.census.gov

Summary File 3 (SF3)

Detailed Tables: P6-Race, P7-Hispanic or Latino by Race,
P8-Sex by Age, P87-Poverty Status in 1999 by Age